

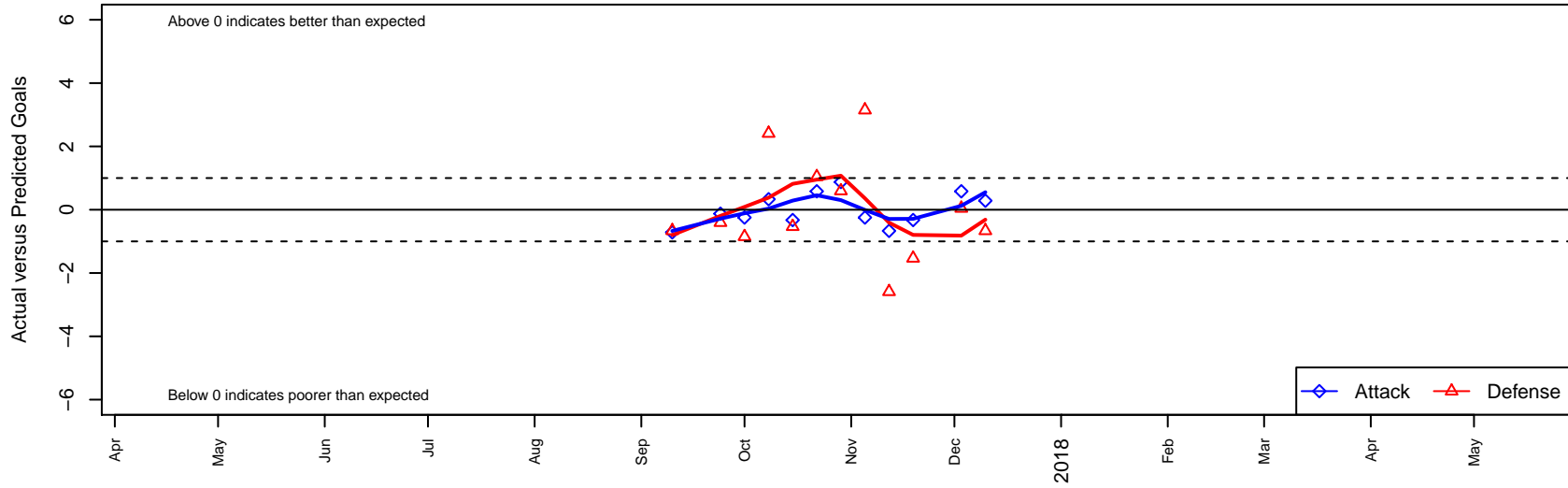
South Mason Shelton B00

, WA
B00 total strength=1316
attack=7.14 defense=5.01
fall league = NPSL DIVISION 1 (00) U18

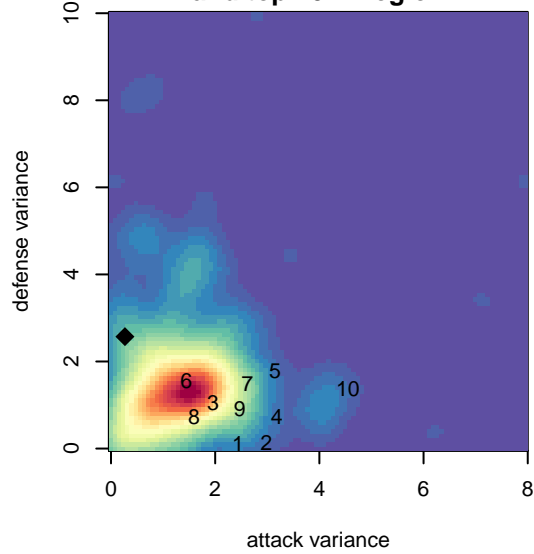
alt names used:
South Mason Shelton B00

Venues played:
2017 NPSL DIVISION 1 (00) U18

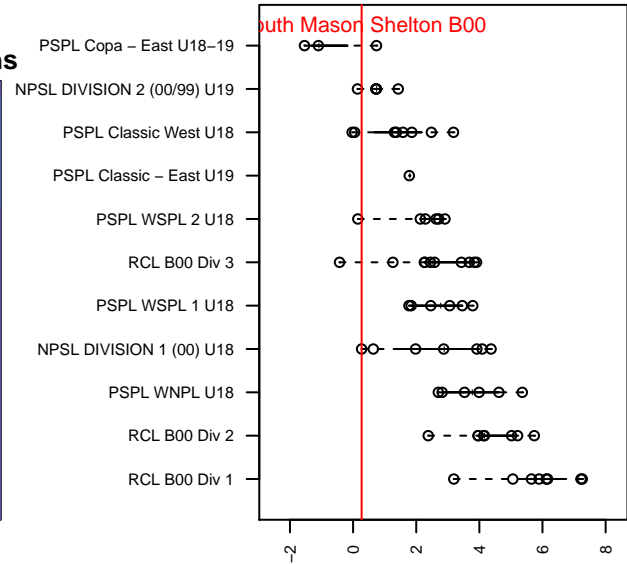
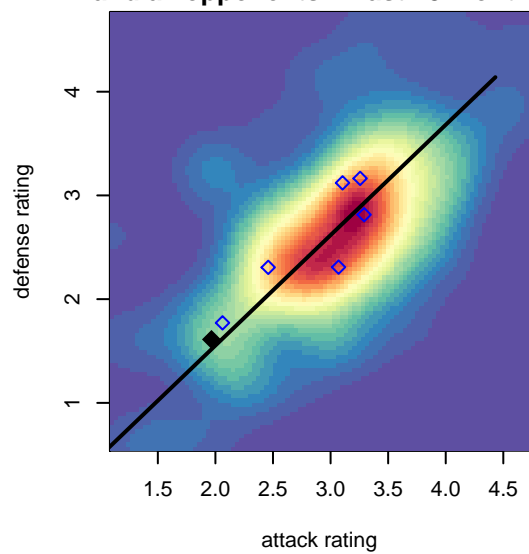
South Mason Shelton B00
Dots are actual minus expected GF (blue circles) and GA (red triangles).
Blue line is smoothed change in attack strength. Red is smoothed change in defense strength.



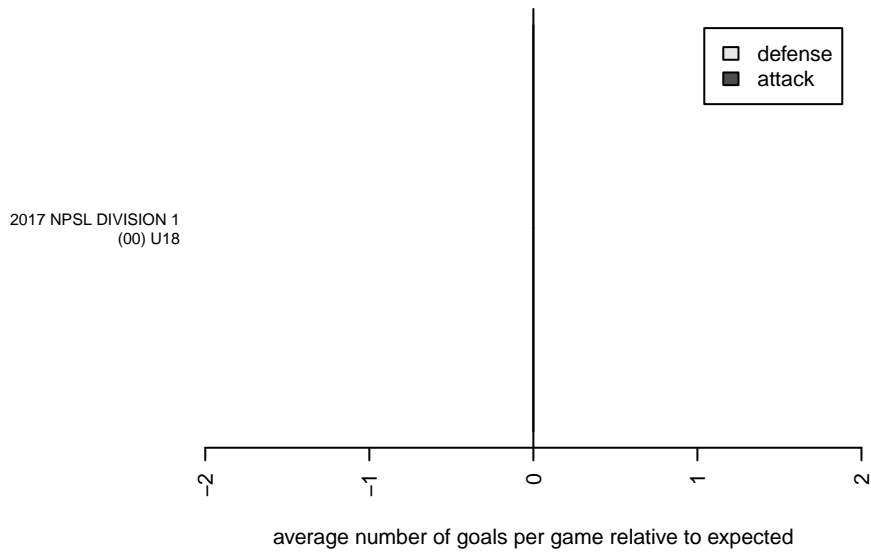
**attack and defense variance (black dot)
relative to other teams
and top 10 in region**



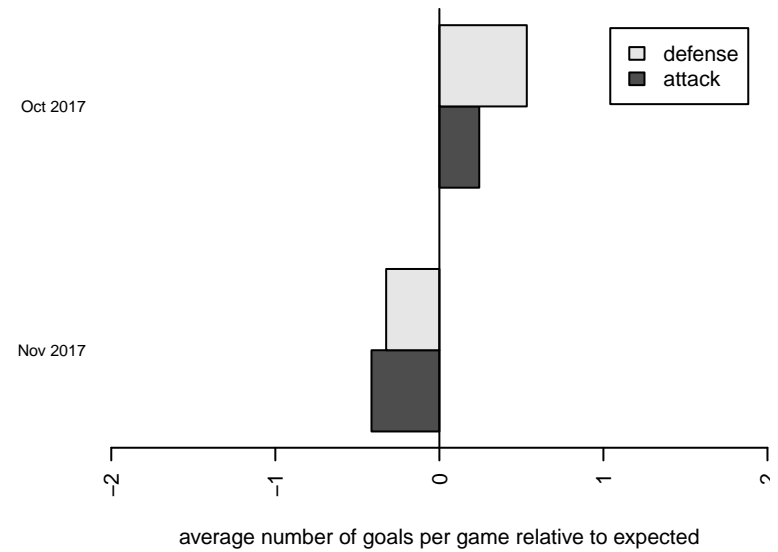
**attack and defense rating
relative to others at age
and all opponents in last 13 months**



Performance relative to 13 month average



Performance relative to 13 month average



date	home		away		venue	pred.home	pred.away
2017-12-10	South Mason Shelton B00	1	Southlake Select Eagles B00	3	2017 NPSL DIVISION 1 (00) U18	0.72	2.34
2017-12-03	South Mason Shelton B00	1	Seattle United S Black B00	5	2017 NPSL DIVISION 1 (00) U18	0.42	5.04
2017-11-19	NSC Impact B00	6	South Mason Shelton B00	0	2017 NPSL DIVISION 1 (00) U18	4.47	0.33
2017-11-12	Seattle United W Blue B00	7	South Mason Shelton B00	0	2017 NPSL DIVISION 1 (00) U18	4.41	0.67
2017-11-05	South Mason Shelton B00	0	Crossfire Select Cantrell B00	2	2017 NPSL DIVISION 1 (00) U18	0.25	5.15
2017-10-29	Snohomish United Red B00	1	South Mason Shelton B00	2	2017 NPSL DIVISION 1 (00) U18	1.60	1.13
2017-10-22	Seattle United S Black B00	4	South Mason Shelton B00	1	2017 NPSL DIVISION 1 (00) U18	5.04	0.42
2017-10-15	South Mason Shelton B00	0	NSC Impact B00	5	2017 NPSL DIVISION 1 (00) U18	0.33	4.47
2017-10-08	South Mason Shelton B00	1	Seattle United W Blue B00	2	2017 NPSL DIVISION 1 (00) U18	0.67	4.41
2017-10-01	Crossfire Select Cantrell B00	6	South Mason Shelton B00	0	2017 NPSL DIVISION 1 (00) U18	5.15	0.25
2017-09-24	South Mason Shelton B00	1	Snohomish United Red B00	2	2017 NPSL DIVISION 1 (00) U18	1.13	1.60
2017-09-10	Southlake Select Eagles B00	3	South Mason Shelton B00	0	2017 NPSL DIVISION 1 (00) U18	2.34	0.72